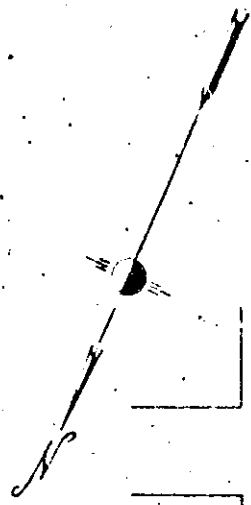
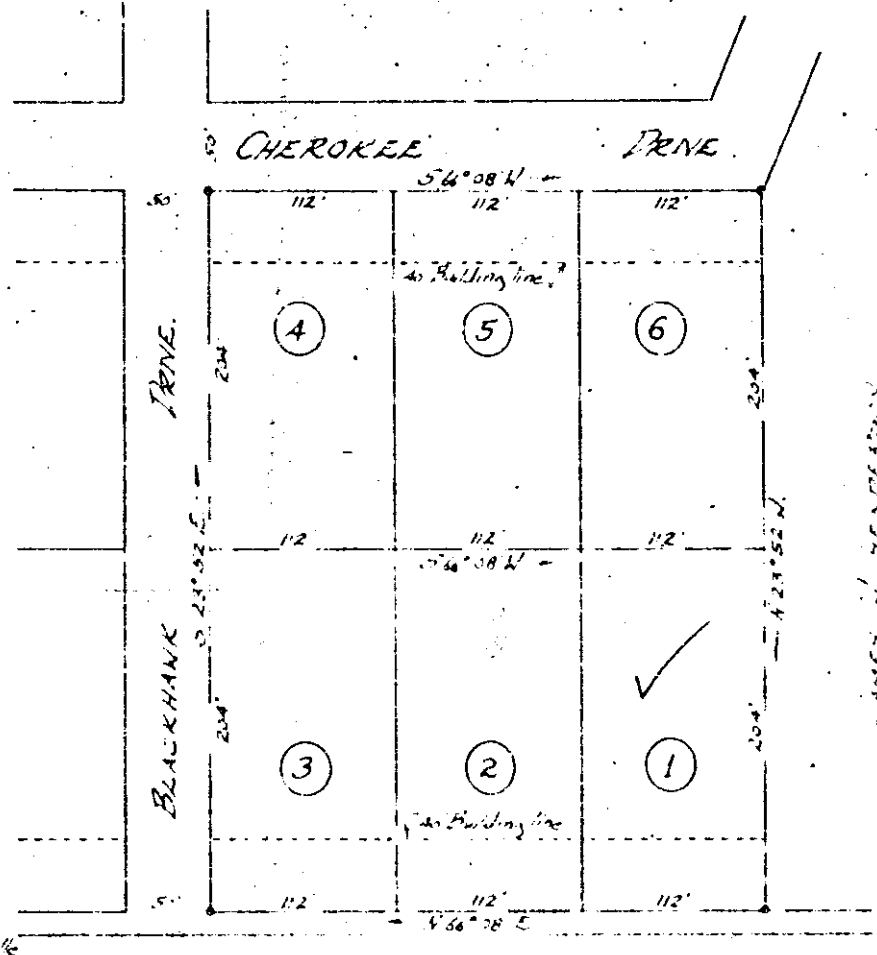


YOUNTS & SPENCE



PLAT #1  
WEST GEORGIA HEIGHTS



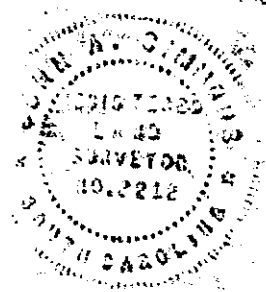
Greenville

WEST GEORGIA ROAD

PROPERTY OF  
**B. F. REEVES.**

Located approx 4 miles SW of Greenville  
FAIRVIEW TOWNSHIP GREENVILLE COUNTY  
SOUTH CAROLINA

PLAT #100 FEET MAY 9 1961



670 S. Williams - City Surveyor 2212  
S.C.C. INC.

27927

MAY 12 1961

See dimensions of all corners

W W - 84

100

YOUNTS & SPENCE

Recorded May 12, 1961 at 10:27 A. M. #27927